

# THE IOT PLATFORM

## BUSINESS MODEL, COST STRUCTURE AND ROI

lot:inc. Meetup 2<sup>nd</sup> Oct 2014



**davra networks**  
managing the internet of things

**BRIAN MCGLYNN**

# Who am I – Who is my Company?



## Davra Networks Limited

Founded 2011, \$2M Seed Funding,

Research and Development - Dublin, Ireland

Sales & Biz Dev – Sunnyvale, California

CRN Magazine – Top 10 Hottest Startups 2014

Paul Glynn – CEO, VP Sales - Crannog

Brian McGlynn – VP Americas – Cisco IOT Champion, Visionary

Tech - Joe Quinn, CTO & Colin Ryan, Head of Development      Multiple Patents, wrote 1<sup>st</sup> Netflow Tool (now a \$100M Industry),

Barry O’Sullivan – ex-Cisco SVP, grew Collaboration from \$0 to \$3B

### Partnerships:

Cisco

IBM

Intel

Lilee Systems

Cohda Wireless

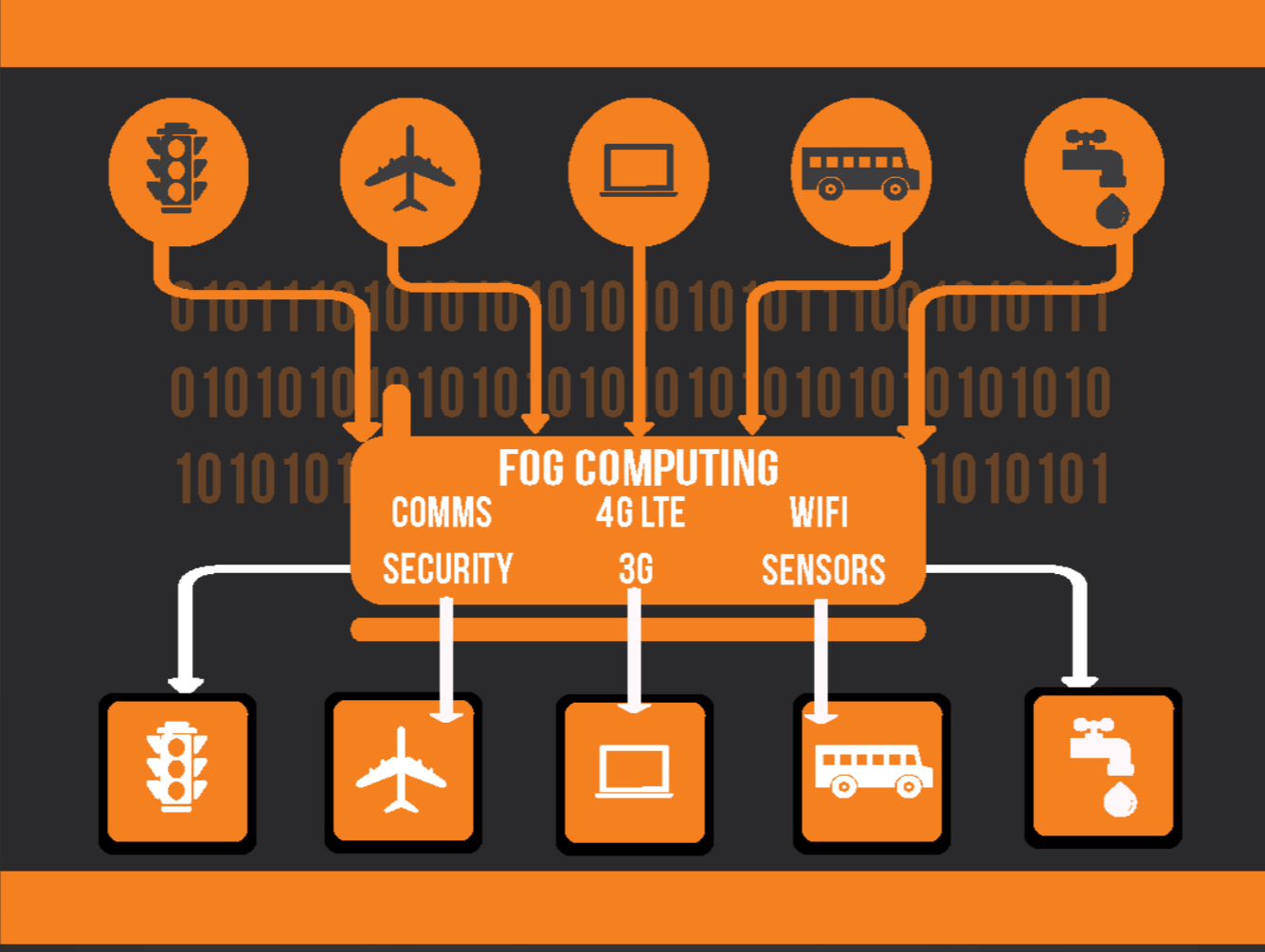
B&B Electronics

# The Internet of Things is a Huge Opportunity

50 Billion+ Connections

1% of Worlds Devices Connected

Bigger than Social Media



\$19 Trillion Value at Stake

Massive Market Transition

Gold Rush Now On

# IOT will be Solutions Driven Economy



IoT Vertical Solutions

**CONNECTED  
TRANSPORTATION**

IoT Vertical Solutions

**CONNECTED  
ENERGY**

IoT Vertical Solutions

**CONNECTED  
INDUSTRIES**

IoT Vertical Solutions

**CONNECTED  
PUBLIC SECTOR**

IoT Vertical Solutions

**CONNECTED  
RETAIL**



# The Internet Of Things

Real World Solutions



**davra networks**  
managing the internet of things

# CONNECTED TRANSPORTATION

## CONNECTED ROADWAYS

DESTINATION : INTERSECTION EL CAMINO 2B

TRAFFIC SIGNAL PRIORITISATION

HIGH PRIORITY INTERRUPTS

MEDIUM PRIORITY INTERRUPTS

LOW PRIORITY INTERRUPTS

6  
5  
0

## CONNECTED SCHOOL BUS

DESTINATION : PLEASANTON ELEMENTARY

DRIVER BEHAVIOUR ALERTS +

JOURNEY COMPLETION **42%**

ENGINES - ALL FUNCTIONING NORMALLY +

CHILDREN ON BOARD

WI-FI STATUS +

**27** +

## CONNECTED MASS TRANSIT

ROUTE : 151

PASSENGERS ON BOARD : 24



+

ENGINE FUNCTIONALITY

**NO FAULTS** +

WI-FI TRAFFIC - 20MB TOTAL



+

DRIVER BEHAVIOUR

IDLING 28% - DRIVING 72% +

DRIVER VIOLATIONS - 4 +

PERCENTAGE ACCELERATING - 32% +

## CONNECTED RAIL

DESTINATION : PENN STATION

PRESENT POSITION : 43°27'53.59"N

PHX - PNN DEPARTED : 13:40 GMT

JOURNEY COMPLETION

**75%**

TRACK PRESSURE LEVELS - ALL OK +

TRACK TEMPERATURE - ALL OK +

WI-FI



+

+



# The Internet Of Things

Real World Solutions

# CONNECTED ENERGY



davra networks  
managing the internet of things

## DISTRIBUTED AUTOMATION

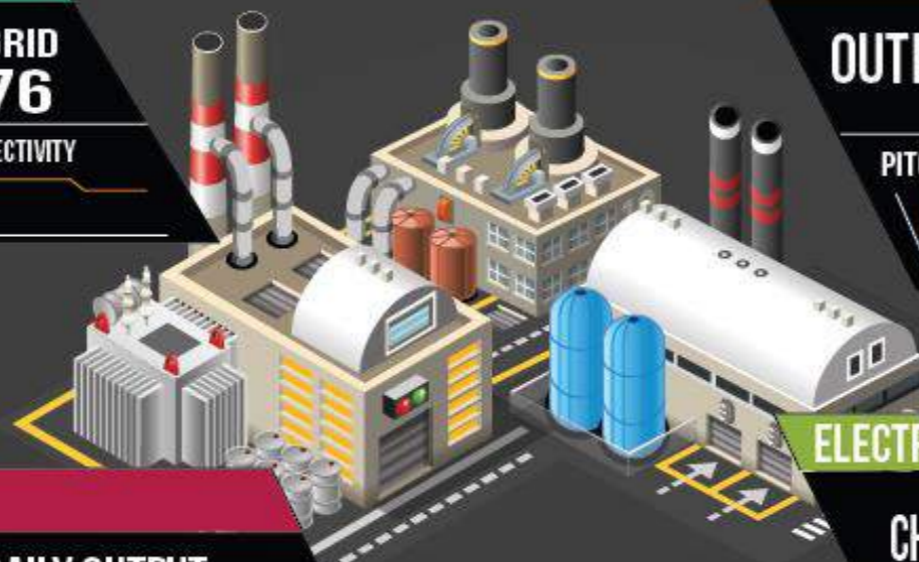
GRID OUTPUT  
**122KV**

HOMES ON GRID  
**42,876**

SCADA CONTROLS SUBSYSTEM

**55** +

CELLULAR CONNECTIVITY



## SMART WIND TURBINE

## SANTA ROSA

OUTPUT **12,000 KV**

CURRENT WIND SPEED  
**12MPH**

PITCH CONTROL SYSTEM

PRESSURE AND TRANSDUCERS

**NO FAULTS** +

## SMART OIL FIELD

GALLONS / SECOND

**567**

DAILY OUTPUT  
**8,000 BARRELS**

ENVIRONMENTAL SENSORS

METHANE (CH<sub>4</sub>) 342  
HYDROGEN (H<sub>2</sub>) 74  
AMMONIA (NH<sub>3</sub>) 34

HYDRAULIC FAULTS

**2 FAULTS** +

## ELECTRIC VEHICLE CHARGING

CHARGED VEHICLES **74**

AVG CHARGETIME **8 MINS**

NETWORK AVAILABILITY

**90%**

FAILED CHARGES

**10** +



# The Internet Of Things

Real World Solutions

# CONNECTED INDUSTRIES



davra networks  
managing the internet of things

### SMART MANUFACTURING

MACHINE FAULTS - 0 **+**

ENERGY PRODUCTIVITY

### CNC MILLING

PRODUCTION CYCLE TIME

BEST PRACTISE AVERAGE ACHIEVED

QUALITY RUN



### TANK MONITORING

|                        |               |
|------------------------|---------------|
| CURRENT LEVEL          | LAST DRAINED  |
| <b>522L</b>            | 15 MARCH 2014 |
| ENVIRONMENTAL ANALYSIS | PERCENTAGE    |
| PH LEVEL - NORMAL      | <b>76%</b>    |

### TELECOM INFRASTRUCTURE

BACKHAUL FIBRE

LATENCY JITTER

PACKET LOSS MOS

DOWNLOAD SPEED **156MPS** **+**

### CELLULAR BASE STATION

CELLULAR RADIO

LATENCY JITTER

PACKET LOSS MOS

RSSI SIGNAL STRENGTH

### PRECISION FARMING

SOIL ANALYSIS

TEXTURE : 0.10-0.25  
DEPTH : 5.1CM - 6.0CM  
NITROGEN LEVELS 6-20MG/DL

FERTILIZER USAGE **6.87799TN**

### NEBRASKA CROSS FIELD

WEATHER **43F**

NITROGEN LEACHING **25%**



# The Internet Of Things

Real World Solutions

## CONNECTED PUBLIC SECTOR



davra networks  
managing the internet of things

CONNECTED ROADWAYS DESTINATION : INTERSECTION EL CAMINO 2B

TRAFFIC SIGNAL PRIORITISATION

HIGH PRIORITY INTERRUPTS

MEDIUM PRIORITY INTERRUPTS

LOW PRIORITY INTERRUPTS

6  
5  
0



### PUBLIC SAFETY VEHICLES

OFFICERS KELLY/DOLD

CURRENT LOCATION - BASELINE BLVD

IP CALLS ANSWERED

6

VIDEO SURVEILLANCE

FRONT CAMERA

BACK CAMERA



WI-FI

26GB

### PUBLIC SAFETY

CITIZEN EXPERIENCE **OPTIMAL**

CITY ENVIROMENT

NOISE POLLUTION

CO2 LEVELS

NO2 LEVELS



CONVICTS IN VICINITY

0

SMART PARKING  
AVAILABLE SPACES : 56



### SMART WATER

GALLONS / SECOND

433

PH LEVEL **4.0** ACIDIC

CURRENT WATER QUALITY

CHLOROPHYL - TRACE

SALT - TRACE

ATRAZINE - TRACE

ISOPHORONE - TRACE



# The Internet Of Things

Real World Solutions

## RETAIL



davra networks  
managing the internet of things

### ATM AND KIOSK

SERVICE DUE

**FEB 2016**

PEAK USAGE TIME

**1 - 2PM**

STOCK LEVELS

COCA COLA

SPRITE

FANTA



WI-FI



### GAMING AND LOTTERY

PAYOUT PERCENTAGE

**12%**

REPEAT PATRONAGE

**43%**

CELLULAR CONNECTIVITY



WI-FI



### DIGITAL SIGNAGE

VENDORS USING

**12**

ADVERT ROTATION

**3 MINS**

RSSI



WI-FI



### BRANCH OFFICE

CUSTOMERS TODAY

**236**

POWER USAGE

**23KW**

RSSI



WI-FI



# The IoT Network Gateway Center of IoT World (Drives GTM and ROI)

## FOG COMPUTING

|          |        |         |
|----------|--------|---------|
| COMMS    | 4G LTE | WIFI    |
| SECURITY | 3G     | SENSORS |

Go  
to Market

IOT Platform  
Requirements





# System Integrator\Network Integrator Key to IoT (Driving GTM & ROI)



| Owner + Integrator | Supplier | Components              | Cost    |
|--------------------|----------|-------------------------|---------|
| PRESIDIO           | Presidio | Service Layer           | \$4,240 |
| PRESIDIO           | Davra    | IoT Platform            | \$ 500  |
| PRESIDIO           | Presidio | Cloud Infrastructure    | \$ 600  |
| PRESIDIO           | AT&T     | Cellular Provider       | \$ 360  |
| PRESIDIO           | Cisco    | IoT Gateway Vendor      | \$1,000 |
| PRESIDIO           | TCM      | Electrical Fitter       | \$ 350  |
| PRESIDIO           | B&B      | Sensors and Telematics  | \$ 150  |
|                    |          | \$200 PER BUS PER MONTH | \$7,200 |



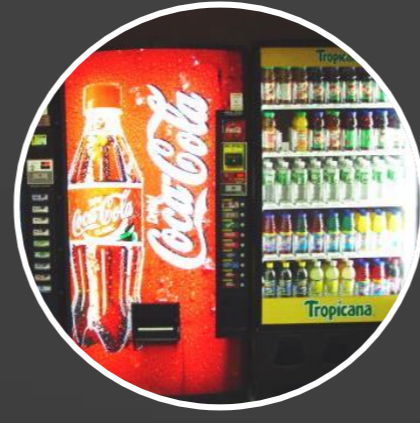
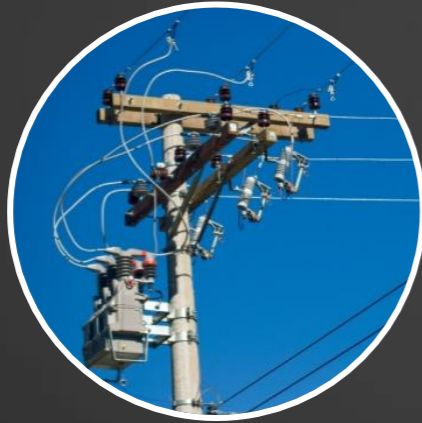
# RuBAN™ is Designed for a Gateway/ SI Driven World

Deploy

Manage

Analyse

Present





# RuBAN™ is Designed for a Gateway/ SI Driven World

Deploy

Manage

Analyse

Present



# RuBAN™ is Designed for a Gateway/ SI Driven World

Deploy

Manage

Analyse

Present





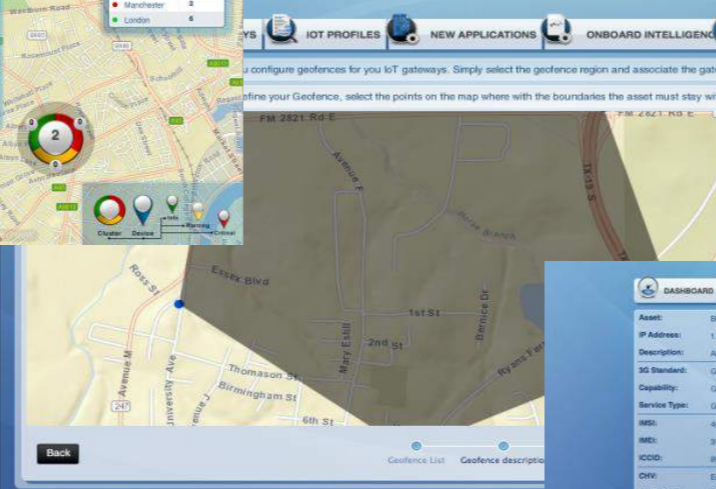
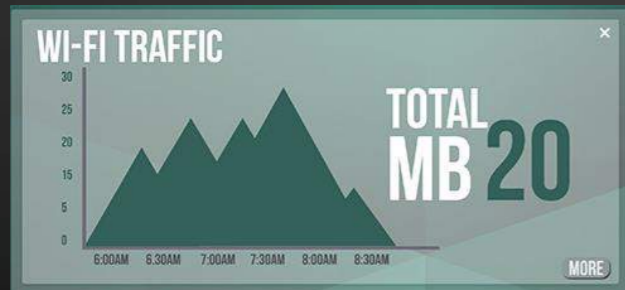
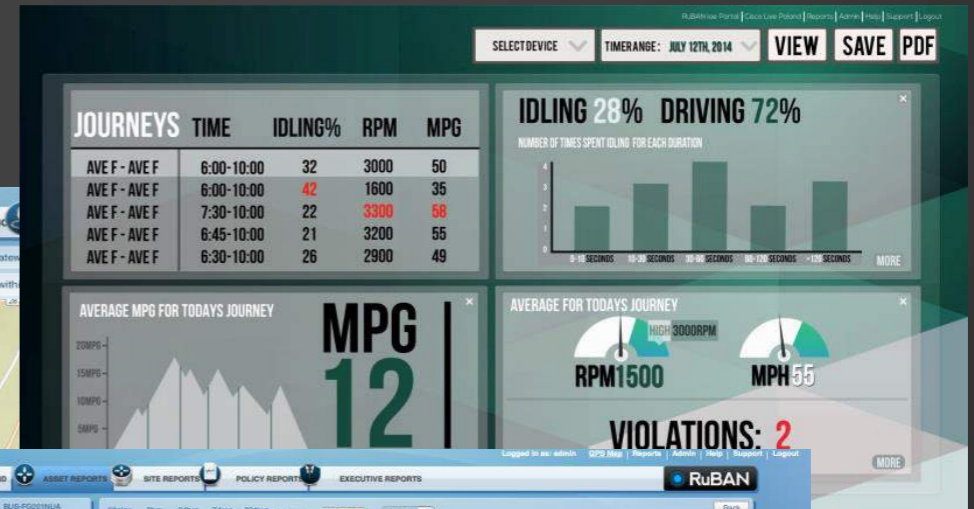
# RuBAN™ is Designed for a Gateway/ SI Driven World

Deploy

Manage

Analyse

Present



## ROI Worked Example 1

### Connected School Bus Example



# Smart & Connected School Bus K-12

Yes, learning  
can happen  
in a Bus!

Smart Bus  
V  
Dumb Classroom

Location services  
to  
Parents \ Students

Rebalancing the K-12 asset portfolio to  
maximize student success & experience



BYOD for Continuous learning on the bus before and after school

**Learning anywhere, Anytime!**

More learning,  
cheaper &  
delightful

Smart video  
surveillance  
And Safety

Allow parents  
to communicate  
with drivers





# K-12 Bus Location Services











# K-12 Bus Incident Management - Safety

RuBAN IoE Portal | Dashboard | Reports | Admin | Help | Support | Logout

Internet of Everything

10 Mins | Satellite | Street

**HISD-DEMO-4358** 107.107.189.6  
FTX175280XC - HISD-DEMO-4358 RuBAN

|                   |            |             |                 |            |
|-------------------|------------|-------------|-----------------|------------|
| <b>Cellular</b>   | RSSI       | ECIO        | Data Plan       | Throughput |
| <b>Health</b>     | CPU        | Memory      | Incidents       | Interfaces |
| <b>Telematics</b> | Engine RPM | Throttle    | Speed           | Idling     |
| <b>Reports</b>    | Telematics | Maintenance | Student Tracker | WiFi       |
| <b>CCTV</b>       | Stream     | Quality     | Report          |            |

Dashboard | Cell Report | Telematics

**IoT Verticals**

- Connected Cities - UK
- Connected School Bus - Texas
- Connected Transport - Berlin
- Internet of Things World
- Smart Agriculture - Australia
- Smart Cities - Rome

RuBAN Enabling IoE

Cluster Asset Info Warning Critical





# K-12 Bus School Journey Replay- Safety

**RuBAN**  
Enabling IoE

**GPS REPLAY**

Thursday, 04 September 2014

| From  | Towards | Time  |
|-------|---------|-------|
| AVE F | AVE F   | 15:01 |
| AVE F | AVE F   | 08:01 |

at 3 Sep 15:01

at 3 Sep 16:11 1 hour 9 mins

**CPU**

**Ec/Io**

**Memory**

**RSSI**

|  |                              |
|--|------------------------------|
| <b>Bus Geo Fence</b><br>The bus cannot break the geo fence | 107.107.189.6<br>3 Sep 15:53 |
| <b>Bus Geo Fence</b><br>The bus cannot break the geo fence | 107.107.189.6<br>3 Sep 15:53 |
| <b>Bus Geo Fence</b><br>The bus cannot break the geo fence | 107.107.189.6<br>3 Sep 15:53 |

RuBAN IoE Portal | Dashboard | Reports | Admin | Help | Support | Logout

Internet of Everything

**RuBAN**  
Enabling IoE





# K-12 Bus Student pickup - Safety

Huntsville Independent School District **BusStopAnalysis**

RuBAN IoE Portal | BusStopAnalysis | Reports | Admin | Help | Support | Logout

Device: HISD-DEMO-4358 | June 25, 2014, 12:06 pm - 1:40 pm | Edit | Save

Map | Satellite

SS 08 906 FM 247

Drop Off 2:17PM | Pick Up 6:58AM

Students: 1  
MEKIBBINS, AIRIANNA

Wednesday 25 June  
Arrived At 7:01 AM | Waited 15 Seconds

Tweets

**Roadnow Texas** @roadnowtx 24 Jun  
Traffic congestion, average speed 10mph on TX-30 EB between TX-19 (Huntsville) (West) and FM-2821/Fish - roadnow.com/us/tx/events/t...

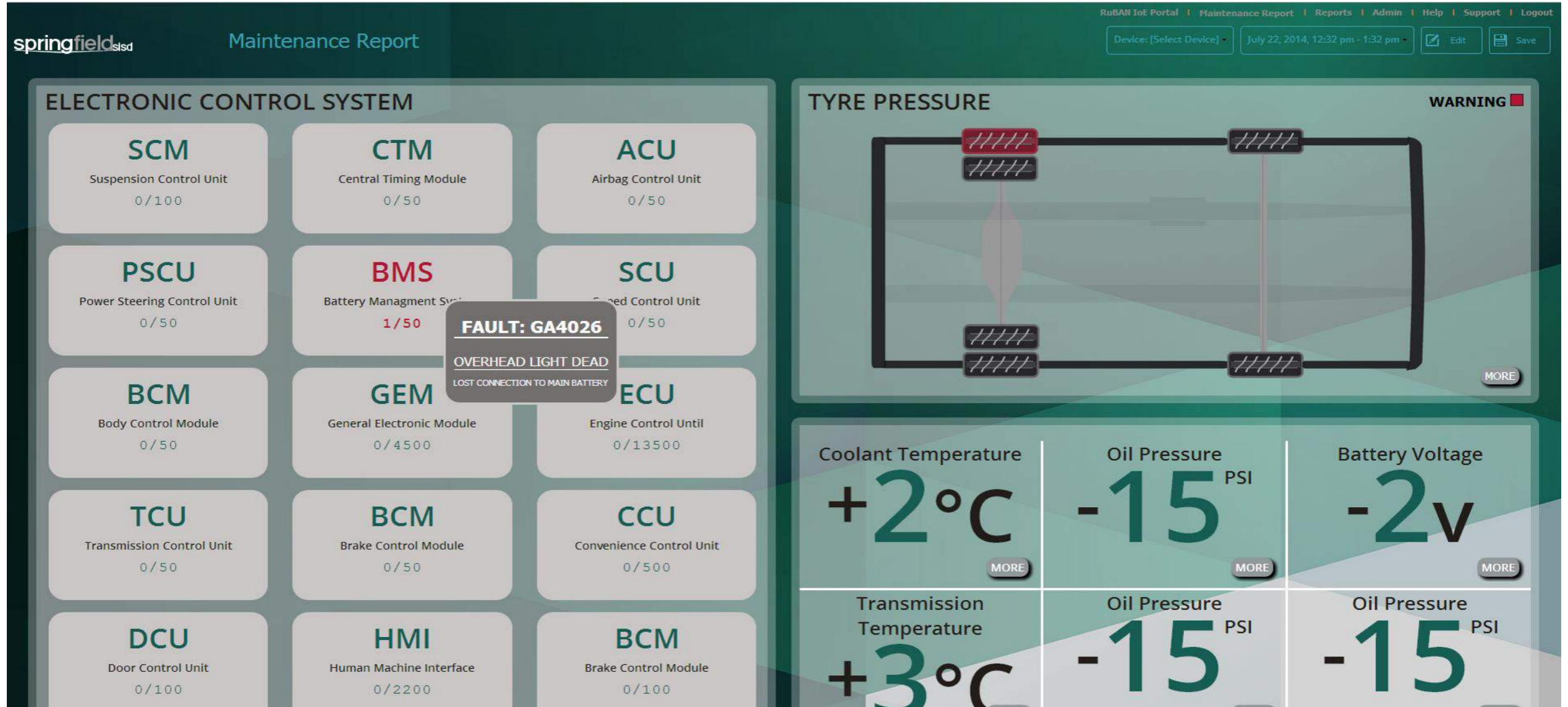
**Luke Pierce** @UncleLuke333 12 Oct  
@weatherchannel storms in Huntsville, TX has traffic on I-45 almost stopped pic.twitter.com/GKuFiwHfkn

Compose new Tweet...

Map data ©2014 Google | Terms of Use | Report a map error



# K-12 Bus Health Analysis - Safety







# K-12 Bus Video Surveillance- Safety

The screenshot displays a video surveillance interface for a school bus. The main video feed shows the interior of the bus, with rows of grey seats and a central aisle. A large white play button is overlaid on the center of the video. In the top left corner, the "davra networks" logo is visible, along with the text "managing the internet of things". To the right of the logo, the text reads "Huntsville School District : FTX175430XC Timerange : July 1st 2014 1:30PM - 4:30PM". On the left side, there is a map showing the bus's location, with a yellow pin and a green line indicating the route. A red pin is also visible on the map. In the bottom right corner, a notification box displays "Minor Fault : Short Idling Time, 9.72 Seconds." The interface includes various control elements: a person icon and a close button (X) in the top right; zoom in (+) and zoom out (-) buttons; a large circular camera viewfinder; and a play/pause button at the bottom right. A progress bar is visible at the bottom of the video feed.



# K-12 Bus Journey Analysis

RuBAN IoE Portal | Telematics | Reports | Admin | Help | Support | Logout

Huntsville Independent School District Telematics

Device: HISD-DEMO-4358 | June 23, 2014, 12:03 pm - 1:44 pm | Edit | Save

### JOURNEYS

|                               | TIME                   | SPEED | RPM  | MPG |
|-------------------------------|------------------------|-------|------|-----|
| 96-98 SMITH ... - EZBET QA... | 25 JUN 7:22 - 8:18 PM  | 26    | 1479 | 14  |
| 101 MARTIN L... - EZBET Q...  | 25 JUN 12:06 - 1:40 PM | 24    | 1455 | 18  |
|                               |                        | 22    | 1375 | 17  |
|                               |                        | 23    | 1433 | 16  |
|                               |                        | 23    | 1412 | 17  |

### AVERAGE MPG FOR SELECTED JOURNEY

**MPG 16.7**

### RPM - MPH - THROTTLE

23-Jun-14 13:31  
Engine Speed: 1616RPM

### MPH 23

US-190, HUNTSVILLE, TEXAS  
ADDRESS IS APPROXIMATE

### IDLING 10.0% DRIVING 90.0%

NUMBER OF TIMES SPENT IDLING IN EACH DURATION

| Duration       | Number of Times |
|----------------|-----------------|
| 0-10 Seconds   | 12              |
| 10-30 Seconds  | 12              |
| 30-60 Seconds  | 9               |
| 60-120 Seconds | 1               |
| >120 Seconds   | 1               |

## ROI Worked Example 2

### Precision Farming



# The IoT ROI



# QUESTIONS AND ANSWERS



**BRIAN MCGLYNN**





# BACKUP SLIDES